



Say hello  
to a high  
country  
adventure

SAY HELLO TO RED®

## RAMADA RESORT BY WYNDHAM DINNER PLAIN MT HOTHAM

Whether you explore the wilderness in summer, or witness the snowy wonderland presented in winter, Victoria's alpine high country is breathtaking all year round. Combining stunning landscapes and excellent accommodation, the resort offers visitors a perfect base to experience thrilling activities in the snow or outdoor adventures on the summer slopes and the lively alpine village at night.

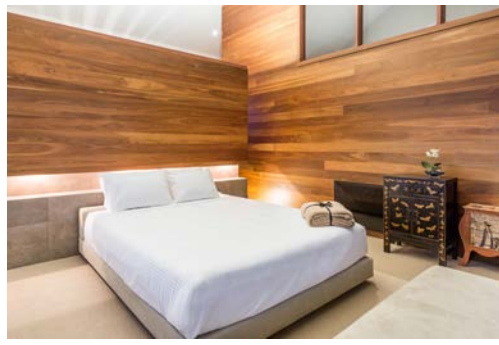
### RESORT FACILITIES

**A HOST OF WINTER ATTRACTIONS** can be easily accessed from Dinner Plain, including snow tubing, sled dog treks, tobogganing and local cross country ski runs. In the summer, visitors to the village can easily wander to one of the local hiking trails or take to the Great Alpine Road on a mountain bike.

[ramada.com](http://ramada.com) | [ramadadinnerplain.com](http://ramadadinnerplain.com) | +61 3 5159 6422

**RAMADA**®  
RESORT BY WYNDHAM  
DINNER PLAIN, MT HOTHAM

MEMBER OF  
**WYNDHAM**  
REWARDS™



## ROOM INVENTORY

Room type	Bedding configuration	Max. occupancy	Room type	Bedding configuration	Max. occupancy
Hotel room	1 x queen bed	2	2-bedroom Grand	1 x queen bed, 1 x queen single	4
1-bedroom standard	1 x queen bed, 1 x sofa bed	4	3-bedroom deluxe	2 x queen bed, 1 x queen single	6
1-bedroom deluxe	1 x queen bed	2	3-bedroom Grand	2 x queen bed, 1 x queen single	6
1-bedroom deluxe	1 x queen bed, 1 x double bed	4	4-bedroom deluxe	2 x queen bed, 2 x queen single	8
2-bedroom deluxe	1 x queen bed, 1 x queen single	4	4-bedroom Grand	2 x queen bed, 2 x queen single	8
2-bedroom deluxe, 1 bath	1 x queen bed, 1 x queen single	4			

## ACCOMMODATION FACILITIES

**THICK WITH HISTORIC CHARM**, the resort offers lodge accommodation as well as two, three and four-bedroom fully-furnished chalets. Although each chalet is unique, all are inspired by the cattleman's huts of the Victorian High Country and feature stone and wood finishes with pitched corrugated iron roofs. Chalets are equipped with dishwashers, LCD televisions, full-sized fridges, full kitchens, laundry facilities, microwave, oven and Wi-Fi (charges apply).

## LOCATION

**RAMADA DINNER PLAIN** is just 10 minutes from one of the nation's premier ski fields, Mt Hotham. The village itself offers a range of snow experiences and easy access for thorough exploration of the region, including the historic huts of the high country cattlemen. Unwind locally at Australia's highest brewery, Blizzard Brewing Company, or visit Onsen Retreat & Spa to escape the winter cold.



## RAMADA RESORT BY WYNDHAM DINNER PLAIN MT HOTHAM

12 Big Muster Drive  
 Dinner Plain, VIC, 3898  
 Australia  
 tel: +61 3 5159 6422  
 dinnerplain.reception@wyn.com  
 ramadadinnerplain.com

**CONTACT THE RESORT TODAY TO MAKE A RESERVATION.**

[ramada.com](http://ramada.com) | [ramadadinnerplain.com](http://ramadadinnerplain.com)

**RAMADA**<sup>®</sup>  
 RESORT BY WYNDHAM  
 DINNER PLAIN, MT HOTHAM

MEMBER OF  
**WYNDHAM**  
**REWARDS**